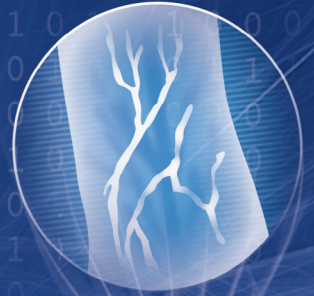


IDENTIFICATION

# MORPHO INTEGRATOR'S KIT

SOFTWARE DEVELOPMENT KIT TO INTERFACE

PC BASED APPLICATIONS WITH MORPHO BIOMETRIC TECHNOLOGY



MAXIMIZE THE PERFORMANCE OF YOUR  
ACCESS CONTROL AND TIME & ATTENDANCE SYSTEM

- Enrollment of high quality fingerprint and finger vein data
- Card encoding compatible with the most widely deployed contactless technologies
- Management of all MorphoAccess® and MorphoSmart™ terminals
- FIPS 201 and MINEX compliant algorithms inside

# MORPHO INTEGRATOR'S KIT

SOFTWARE DEVELOPMENT KIT TO INTERFACE

PC BASED APPLICATIONS WITH MORPHO BIOMETRIC TECHNOLOGY

**Morpho Integrator's Kit (MIK)** is a software development kit which enables our partners to embed easily the best of Morpho's biometric technology into their own Access Control and Time & Attendance solutions.

It offers a set of ready-to-integrate components for enrollment (using MorphoSmart™ sensors), card encoding, user recognition and management of MorphoAccess® terminals.



## ENROLLMENT

MIK ensures the highest quality template data is captured and recorded in database, so as to maximize the performance of the biometric system and reduce user recognition time

- Uses Morpho algorithms, known worldwide for their high level of accuracy and performance
- Incorporates Morpho's advanced enrollment tools and processes: finger positioning automatic control, consolidation over multiple images, quality mark at each capture etc.
- Connects to all MorphoSmart™ devices, the most reliable optical sensors on the market
- Generates high quality templates in multiple formats: ISO 19794-2, ANSI/INCITS 378 and Proprietary (fingerprint or multimodal finger vein and fingerprint)

## CARD ENCODING

MIK encodes user templates onto contactless smartcards

- Ready-to-use functionality
- Supports the most widely deployed contactless technologies:
  - MIFARE® Classic (including 7 byte UID),
  - MIFARE® Plus,
  - DESFire® (with 3DES or AES encryption),
  - iCLASS®
- Reads also Prox® cards

## TERMINAL MANAGEMENT

MIK provides a straightforward solution to administrate biometric terminals

- Interfaces with all fingerprint and multimodal (finger vein and fingerprint) MorphoAccess® terminals so as to build the most reliable Access Control or Time & Attendance systems
- Communication via Ethernet or Wi-Fi (IPv4/IPv6, WEP/ WPA/ WPA2), that can be protected with SSL/TLS protocol
- Full terminal configuration and feature administration
- Database management: user record creation, deletion and broadcast to terminals
- Saves transaction logs to use them in an Access Control or Time & Attendance system
- Controls terminal outputs (Wiegand, Data Clock, TCP/IP, RS 422/485 etc.)

## Development Environments

- Microsoft Visual Studio 2005, 2008 and 2010 (.NET2/.NET4)
- JAVA Wrapper available

## Compatible Operating Systems

- Windows XP, Vista, 7, 8 and Server 2003 & 2008 (R2)

MIK SDK features are activated using licenses

	Biometric data acquisition	Duplicate record detection	1:1 Authentication	1:N Identification	MorphoAccess® terminal management
VERIF	Yes	-	Yes	-	-
IDENTLITE	Yes	Yes	Yes	1:5 000	-
IDENT10K	Yes	Yes	Yes	1:10 000	-
IDENTPLUS	Yes	Yes	Yes	1:20 000	-
IDENT50K	Yes	Yes	Yes	1:50 000	-
MACI	-	-	-	-	Yes